

NW200 Education Resource



I'm Rosie!

colouring pages
word search
quizzes
jigsaw
storyboard

I'm Diesel!



Meet the North West 200 mascots for Ballymoney Museum



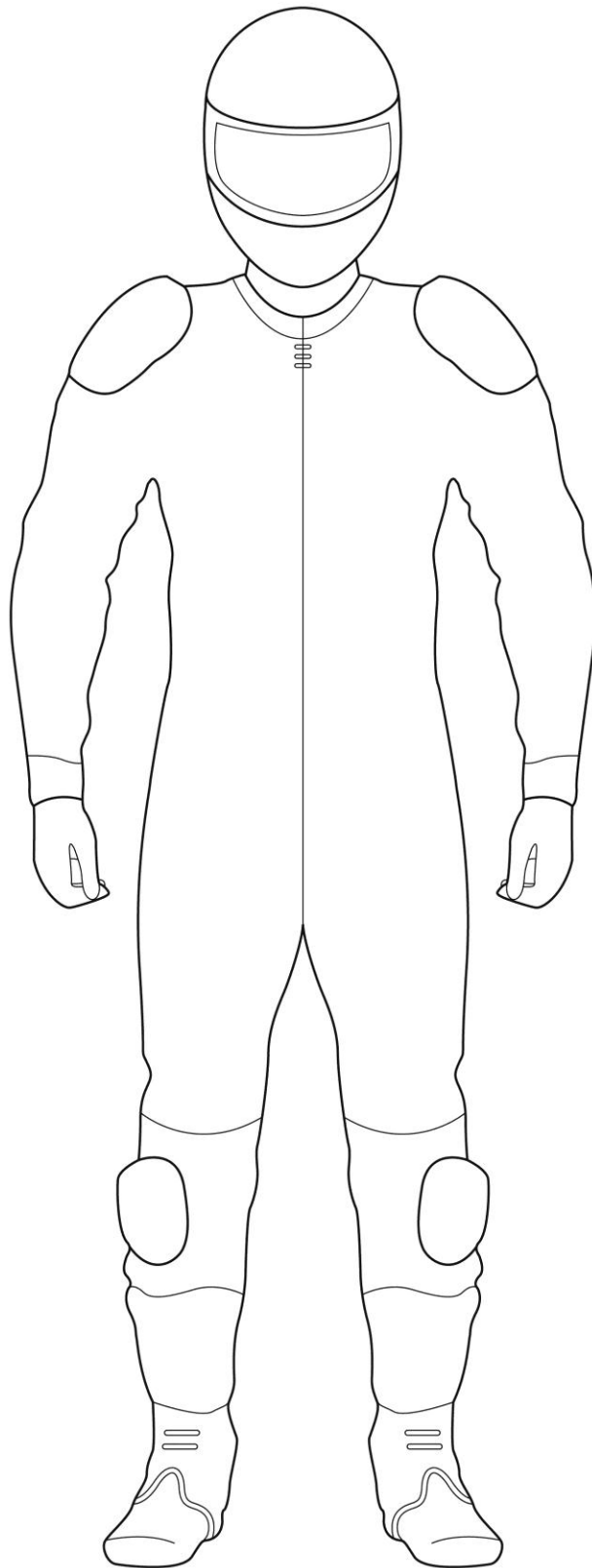
Rosie the Rabbit

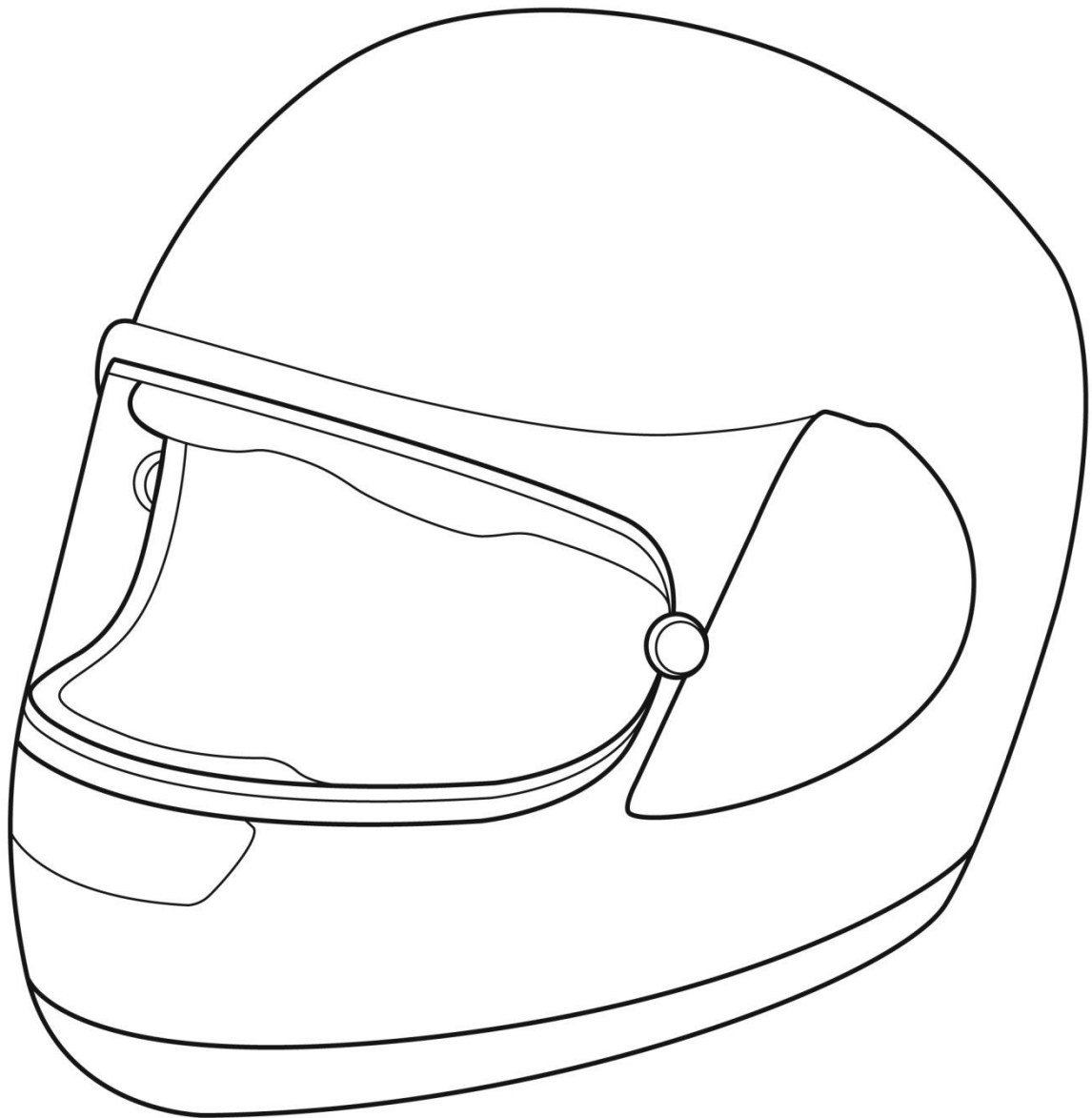
Diesel the Weasel

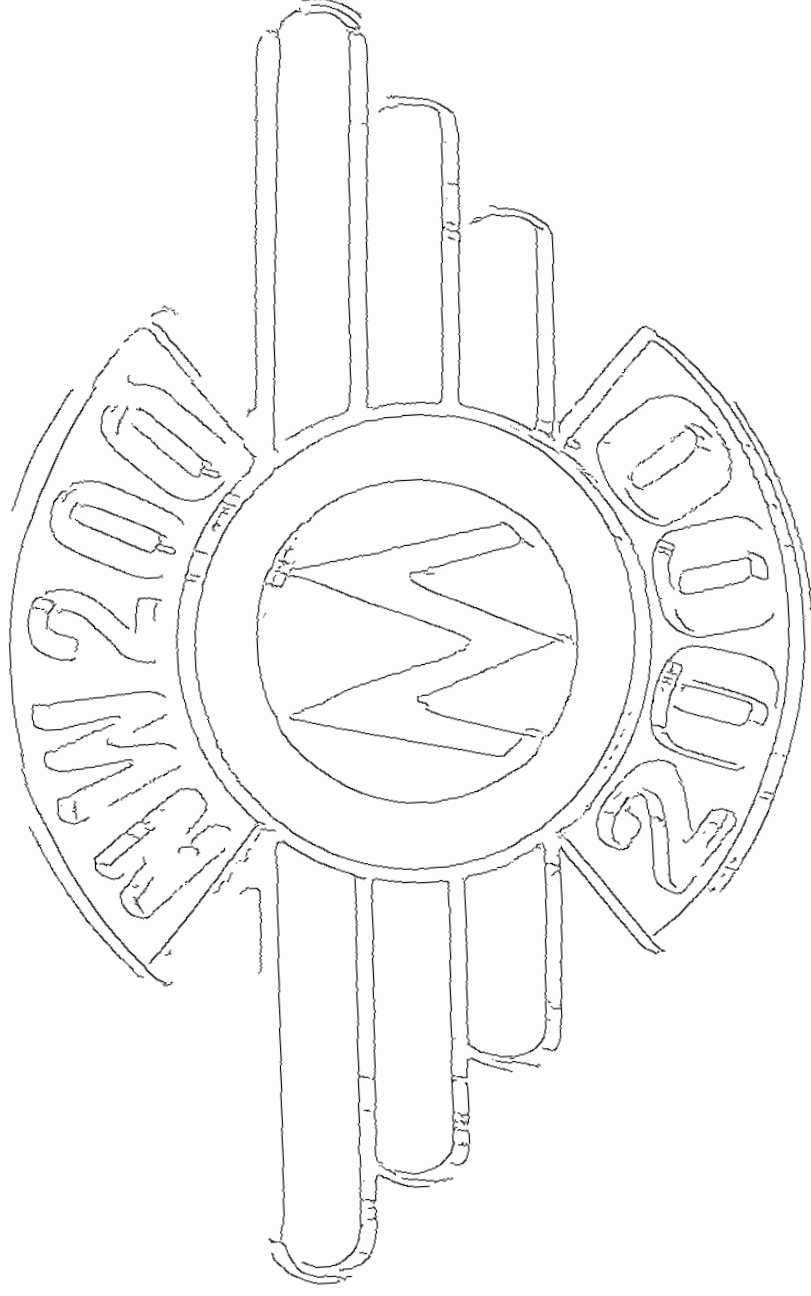




NW200 @ Ballymoney Museum







North West 200 Word Search

Find and circle the words listed below in the grid.
Look for them in all directions including backwards and diagonally.

A	C	O	M	P	E	T	I	T	I	O	N
C	E	T	E	M	L	E	H	D	R	B	G
R	E	G	D	R	E	B	Q	M	V	L	J
O	N	P	L	Y	A	G	T	X	S	W	O
W	I	R	M	O	T	O	R	B	I	K	E
D	G	V	J	S	H	Z	O	U	P	V	Y
S	N	L	T	D	E	E	P	S	J	Y	D
O	E	W	X	U	R	N	H	A	W	T	U
G	O	C	Y	L	S	C	Y	O	D	E	N
M	B	Q	A	P	B	G	Q	L	R	F	L
T	I	U	C	R	I	C	M	Y	T	A	O
Z	V	O	L	U	N	T	E	E	R	S	P

Circuit	Joey Dunlop	Speed
Competition	Leathers	Trophy
Crowds	Motorbike	Volunteers
Engine	Races	
Helmet	Safety	

NW200 Quiz – What Am I?

Can you match the object to its description?

Q1. You wear me when riding a motorbike.



Q2. You might pin me on your clothing.



Q3. You can win me if you are 1st place in a race.



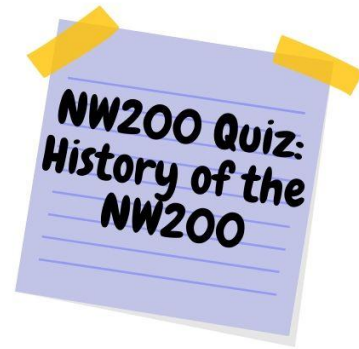
Q4. You sit on me to ride in a race.



Q5. You might buy me as a NW200 souvenir.



Choose your answers to the questions from the words below and write it beside the question.



Q1. Ballymoney rider, Joey Dunlop was often seen wearing what colour helmet when riding his motorbike? _____

Q2. What year did the North West 200 races begin? _____

Q3. What was the name of the first NW200 winner? _____

Q4. Today, the race track is 8.9 miles long. How long was the race track when races began? _____

Q5. What was the fastest ever speed recorded in 2012 by rider Martin Jessop? _____

Q6. The racing circuit takes place between 3 towns, Portrush, Portstewart and which other town? _____

Coleraine

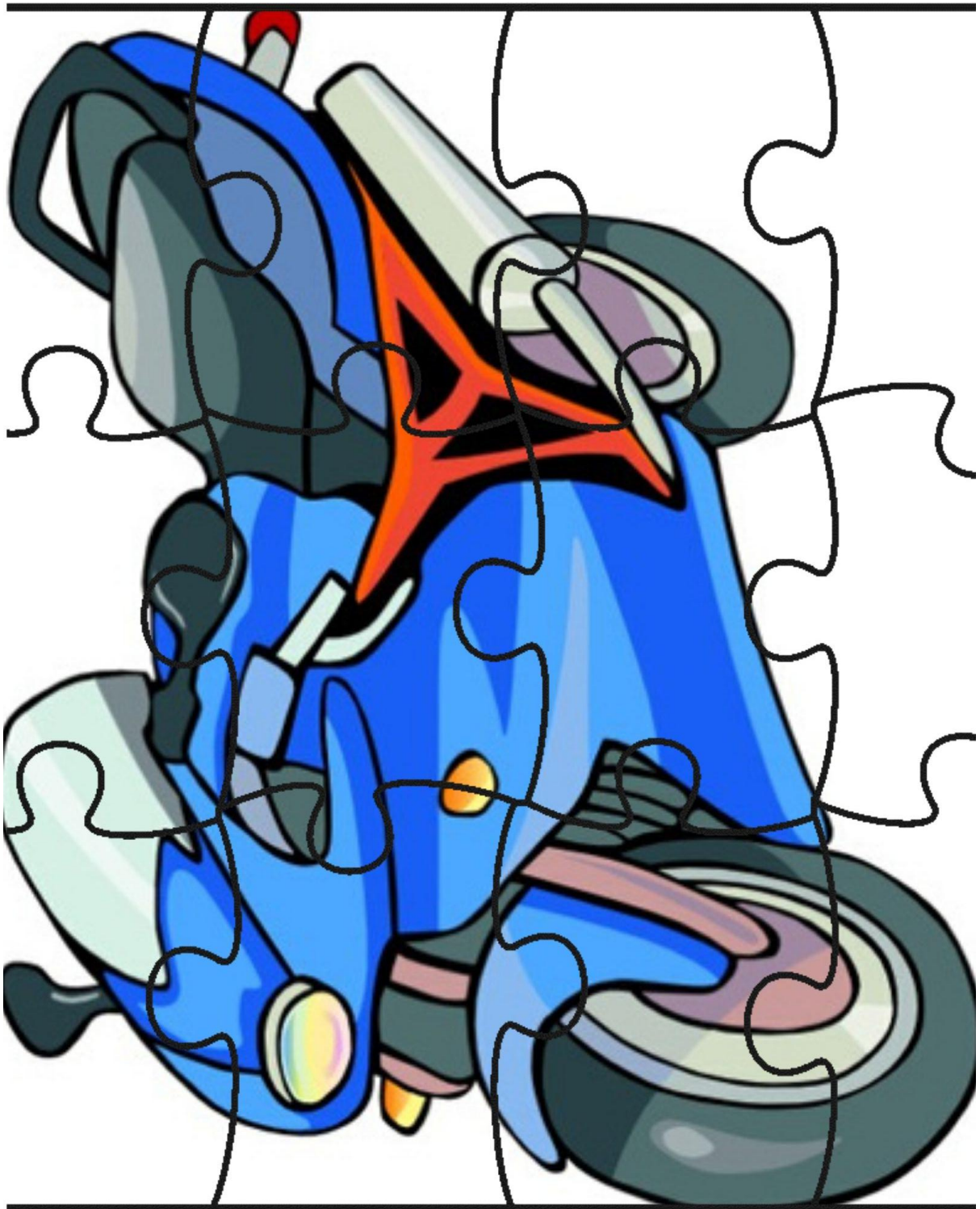
1929

yellow

11 miles

W. J. McCracken

208mph



Print the picture onto card or paper and cut into a jigsaw to put back together.